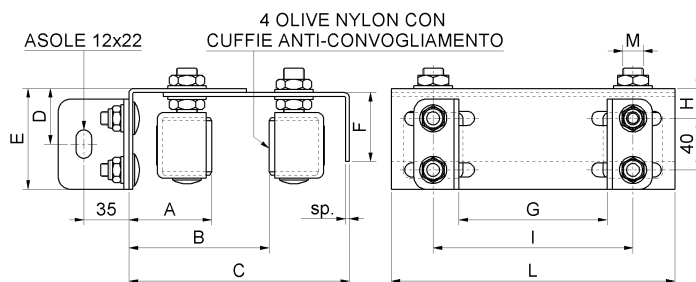
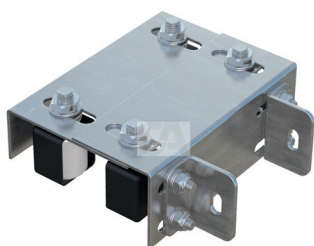


Adjustable upper guide bracket 4 guide rollers, with bracket to be fixed



cod.	mm.	pz/pcs	olive	M	A	B	C	D	E	F	G	H	L	sp.	I	CodTek
462STF.P	PICCOLA	4	Ø30x40	M14	45-86	93-156	151-197	43	76	54	70-140	21	220	3	155	AAC046207ZB
462STF.M	MEDIA	4	Ø40x45	M16	52-90	89-151	154-197	43	76	54	70-140	21	220	3	155	AAC046208ZB
462STF.G	GRANDE	2	Ø40x60	M16	53-91	114-195	204-243	46	81	74	140-220	26	350	4	285	AAC046209ZB



Sliding gates accessories



Galvanized steel/nylon components



- Components to weld and to fix.
- The weld must be adequately sized to support the applied forces and with suitable electrode material.
- Adequately strengthen the areas anchoring the door and/or structure / frame.



Check the product every 6/12 months.
In case of anomalies, prevent the usage of the hinge and the installed product must be checked by professional personnel.



Responsibly dispose of the product and of its packaging respecting the local legislations of the Country of installation.

The company reserves the right to make technical as well as aesthetic changes without previous notice.
All responsibility due to an inappropriate use of the product is declined.

All drawings, photos, trademarks, logos, are of exclusive Combi Araldo's property. All uses not expressly authorized by the company will be prosecuted.